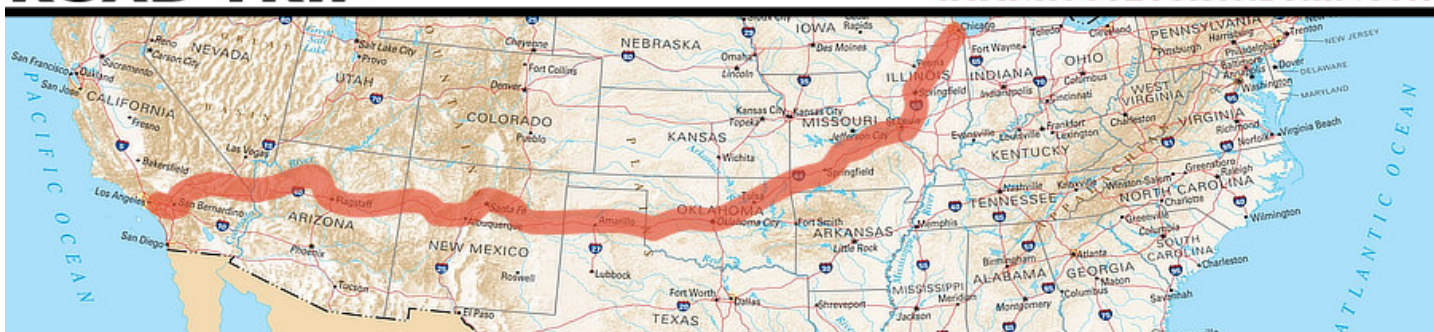


# ROUTE 66

## ROAD TRIP

WWW.ROUTE66ROADTRIP.COM



Travel on Historic U.S. Route 66, seeking the ultimate destinations along the Mother Road!

## Route 66 Maps

"The Mother Road" was established on November 11, 1926, and ultimately stretched 2,448 miles from Chicago to Los Angeles.

From its beginning in Chicago, Route 66 headed south through Illinois and Missouri, and a small section of southeast Kansas.

Maps of Route 66 States	
<a href="#">Illinois</a>	<a href="#">Missouri</a>
<a href="#">Kansas</a>	<a href="#">Oklahoma</a>
<a href="#">Texas</a>	<a href="#">New Mexico</a>
<a href="#">Arizona</a>	<a href="#">California</a>

From there it turned in a more westward direction through Oklahoma and Texas, with the final stretches in New Mexico and Arizona before its termination point in Los Angeles.

Alignments of the road changed often over the years, as improved sections of highway were constructed. In the early years many sections connected only one small town to the next, and had no official federal route number. Over time the route was formalized as a Federal Highway numbered as "U.S. 66".

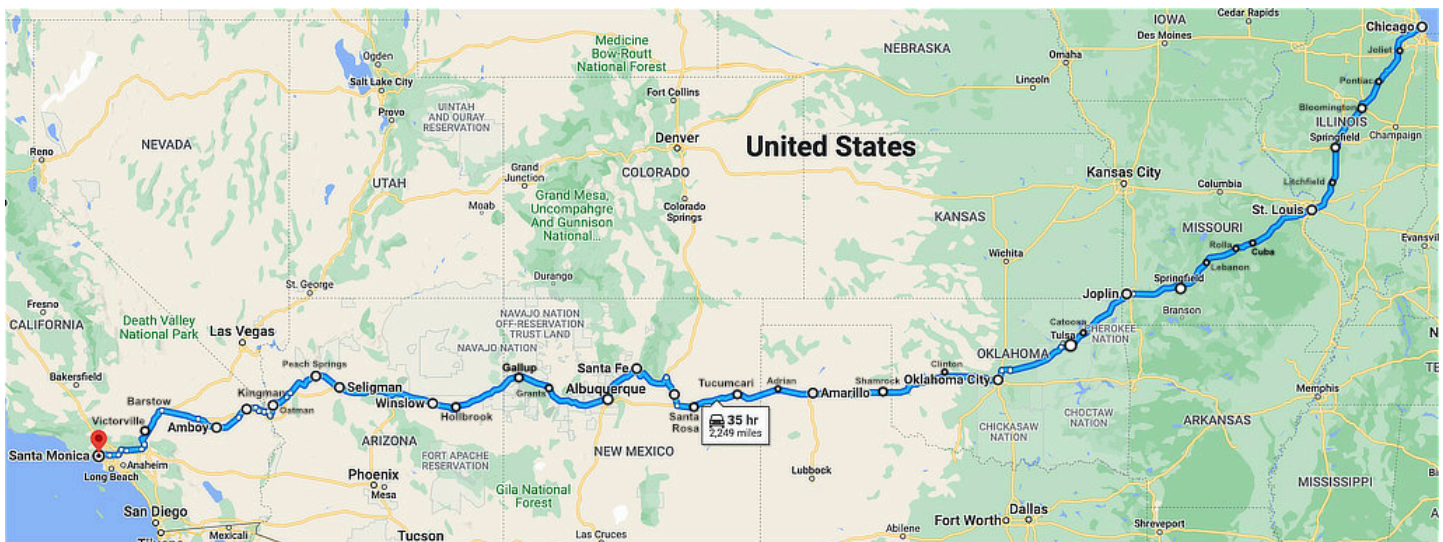
The popularity of America's Highway continues to grow today! So ... ***get your kicks on Historic U.S. Route 66 in 2025!***

# Map of Historic U.S. Route 66

*Map of Historic Route 66 from Illinois to California*



*Map showing the approximate route of U.S. Highway 66 from Chicago to Santa Monica*



## Maps of Route 66 Across Each State

Included below are maps of the eight states through which Route 66 passed, showing the overall, approximate path through each state. Alignment changed over the years, as highway engineering improved. There are many sources online and in print that document detailed, turn-by-turn tours through various alignments.



# ILLINOIS ROUTE 66

## Map of Illinois Route 66: 301 Miles

From its beginning in Chicago, Route 66 headed southwest to Joliet, Wilmington, Dwight, Odell, Pontiac, Bloomington, Lincoln and Springfield. The segment from Chicago to Springfield is roughly a 2.5 hour drive.



Take a road trip on Route 66 across  
Illinois

Leaving Springfield, Route 66 traversed Litchfield, Staunton and Hamel, and then continued on to the Chain of Rocks Bridge at St. Louis, where it turned west through Rolla, Springfield, Joplin and into Kansas and Oklahoma.

Illinois was the first of the eight states through which Route 66 passed to have its segment of U.S. 66 paved, at a time when much of the route across the country was still a gravel or dirt road .



A map showing the route from Chicago to St. Louis via the Illinois River. The route is highlighted in blue and passes through numerous cities including Naperville, Joliet, Wilmington, Braidwood, Gardner, Dwight, Odell, Pontiac, Chenoa, Lexington, Towanda, Normal - Bloomington, McLean, Atlanta, Lincoln, Elkhart, Williamsville, Springfield, Chatham, Auburn, Virden, Nilwood, Litchfield, Mt. Olive, Staunton, Livingston, Hamel, Collinsville, and St. Louis. A callout box indicates a travel time of 5 h 31 min for 307 miles. The map also shows major highways and the Illinois River.





# Hotels and Motels

[Click for Listings!](#)

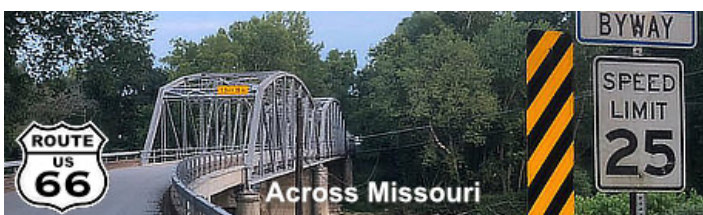


## MISSOURI ROUTE 66

### Map of Missouri Route 66: 317 Miles

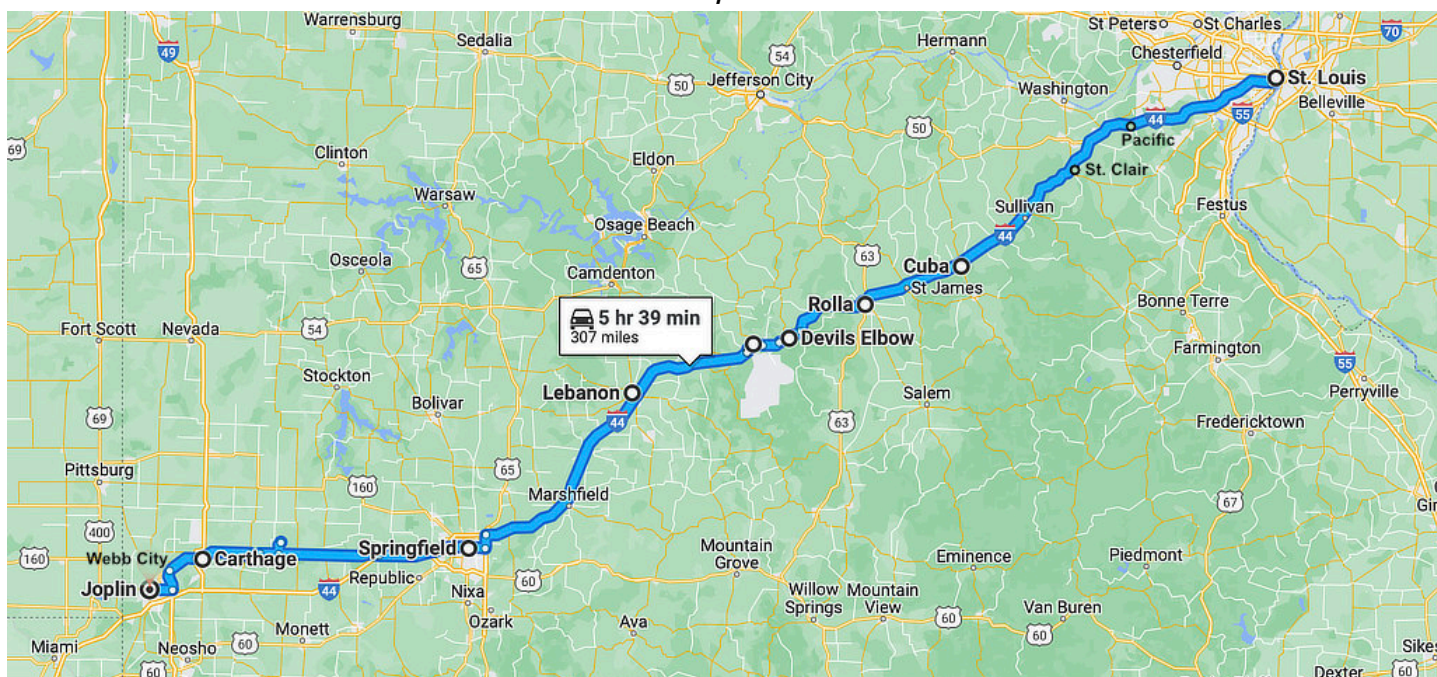
Route 66 across Missouri features a variety of large cities and small towns, connected by roadways over rolling hills and valleys. The Mother Road followed much of the Kickapoo, or Osage, Trail, an Indian trail that later became the Old Wire Road.

Like other Route 66 segments, the actual alignment varied over the years as engineering improvements were constructed.

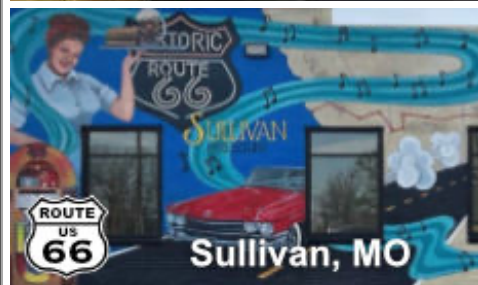
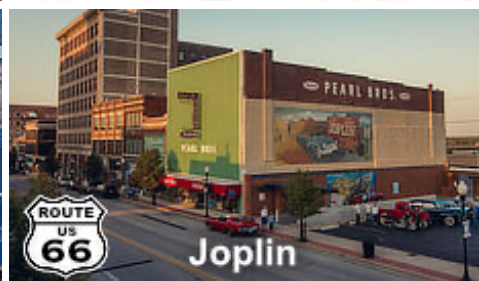
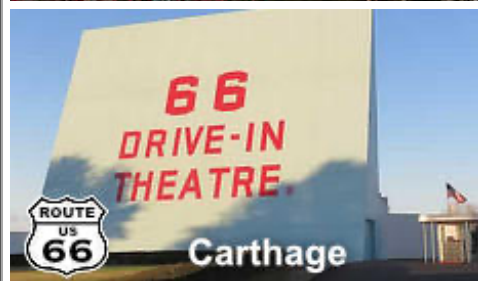
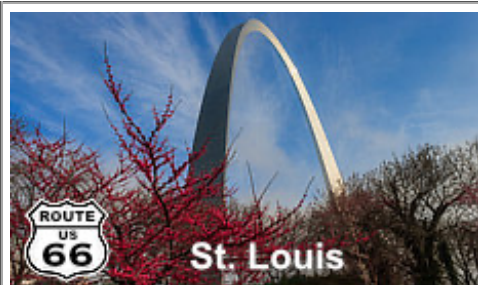


[Take a road trip on Route 66 across Missouri](#)

*Map showing the approximate route of U.S. Highway 66 across Missouri from St. Louis to Joplin*









# KANSAS ROUTE 66

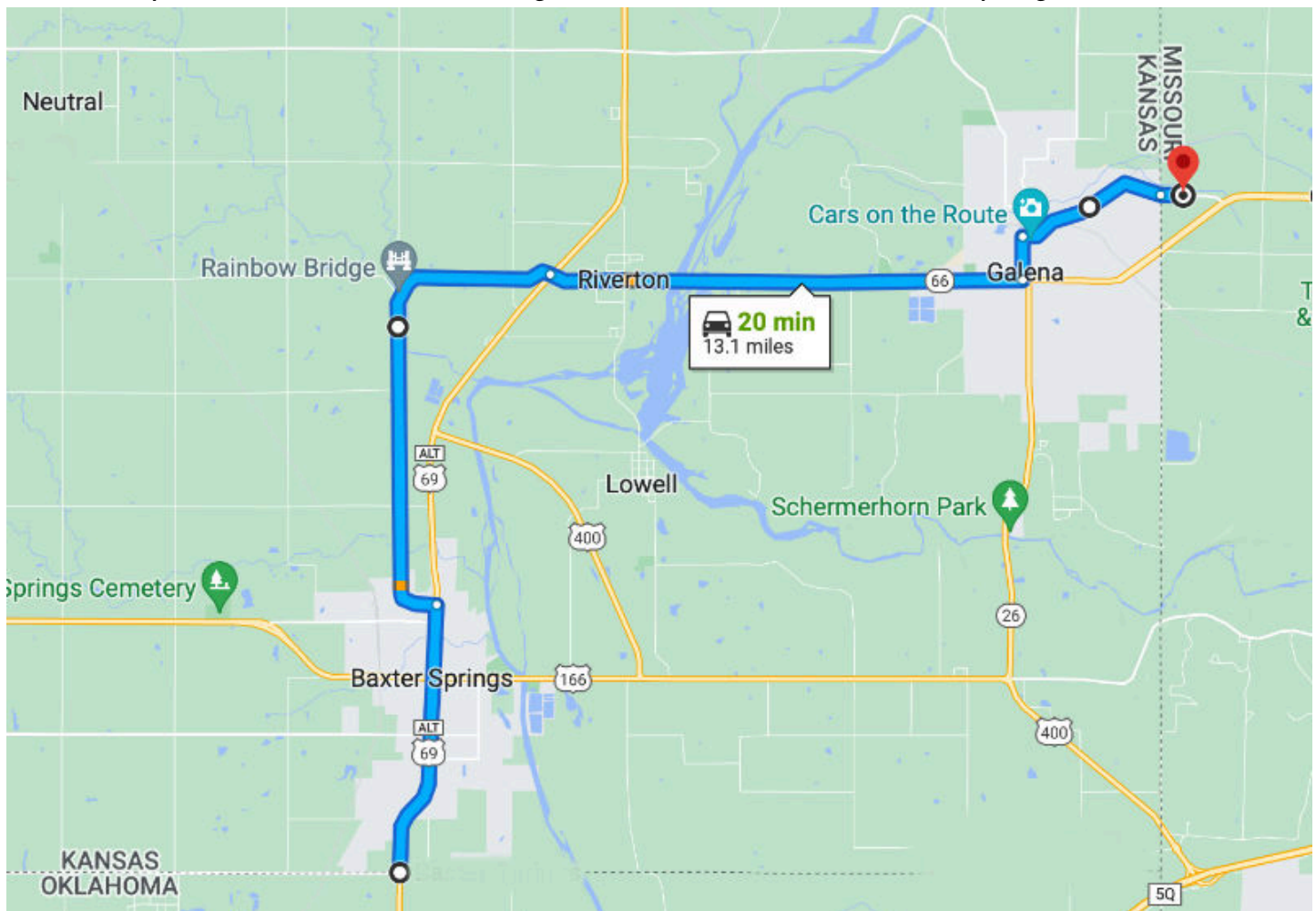
## Map of Kansas Route 66: 13 miles

Route 66 through Kansas was the shortest of all the states, only about 13 miles. It traveled through Galena, Riverton and Baxter Springs. From there it entered Commerce, Oklahoma, and headed southwest through Miami, Alton, Chelsea and Claremore and Tulsa.



Take a road trip on Route 66 across Kansas

*Map of Historic Route 66 through Galena, Riverton and Baxter Springs in Kansas*



# OKLAHOMA ROUTE 66

## Map of Oklahoma Route 66: 432 Miles

As Route 66 left Joplin, Missouri westbound, it was only a short distance to Kansas, and then to the Oklahoma border.

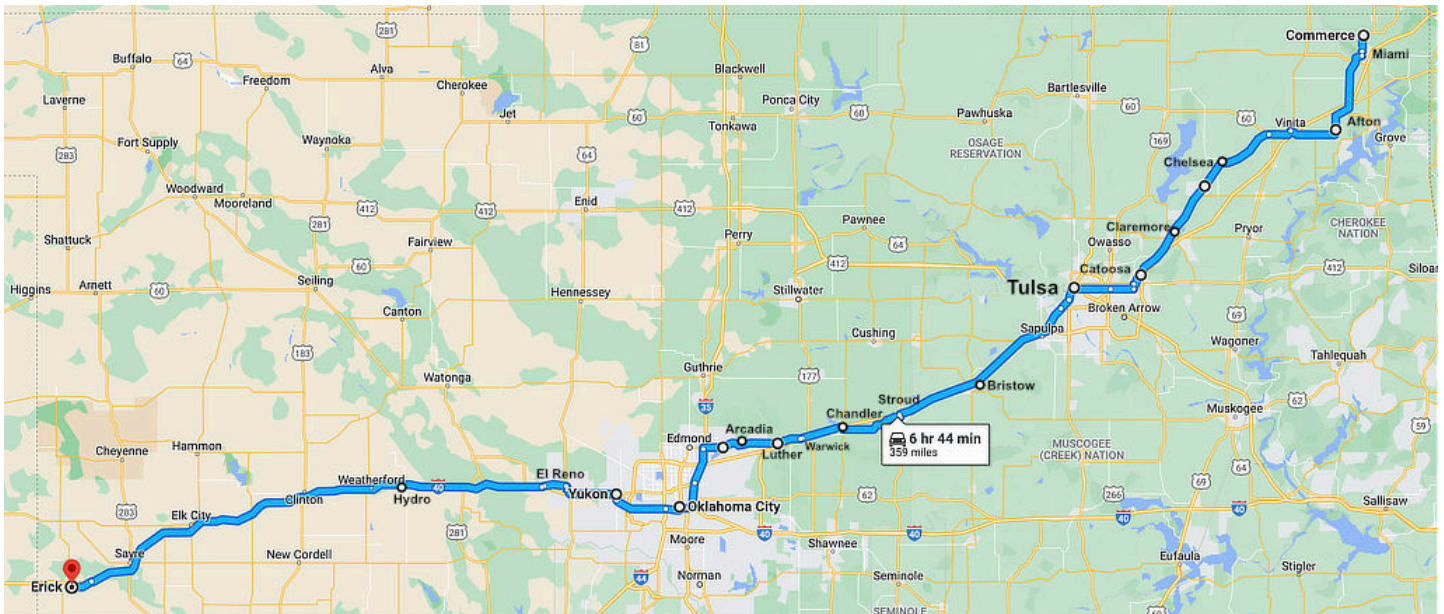
It quickly entered Commerce, and headed southwest through Miami, Alton, Chelsea, Claremore and Tulsa. The road continued through Stroud, Chandler and Arcadia to Oklahoma City. From there, it was a straight shot west through Yukon, El Reno, Hydro, Clinton and Elk City, and finally Texola. The Mother Road crossed the Texas state line at Texola, near Shamrock, and moved on to Amarillo.

The nation's longest drivable stretch of Route 66 crosses Oklahoma, making its way past charming towns, roadside diners and quirky attractions.

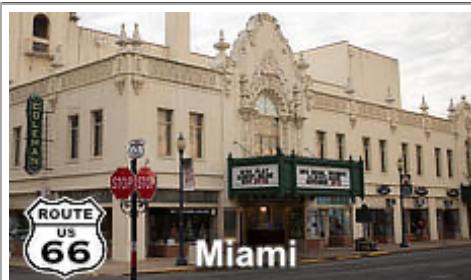


Take a road trip on Route 66 across Oklahoma

*Map showing the approximate route of U.S. Highway 66 across Oklahoma*







Miami



Chelsea



Catoosa



Tulsa



Oklahoma City



Chandler, OK



Yukon, OK



Weatherford



Clinton, OK



Elk City



Sapulpa



Erick, OK



El Reno, OK



Vinita, OK



Arcadia, OK



Claremore, OK



# TEXAS ROUTE 66

## Map of Texas Route 66: 186 Miles

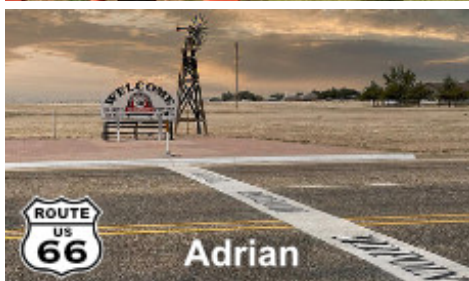
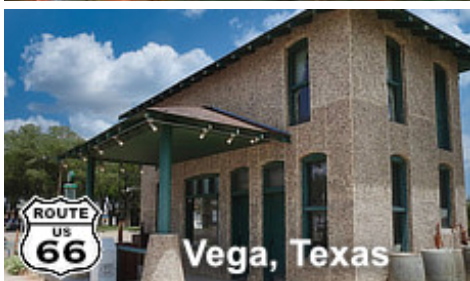
The Mother Road crossed the Texas state line at Texola, OK, near Shamrock, Texas, and traveled through McLean and Groom on its way to Amarillo. From there it continued west to Glenrio. The Route through Texas totaled 186 miles, and closely followed today's Interstate I-40. Heading westbound the route traveled through these places:



Take a road trip on Route 66 across Texas

- Texola OK at the Texas-Oklahoma border
- Shamrock
- McLean
- Groom
- Amarillo
- Vega
- Adrian
- Glenrio at the New Mexico state line

*Map of the approximate route of U.S. Highway 66 across Texas from Shamrock to Glenrio*





# NEW MEXICO ROUTE 66

## Map of New Mexico Route 66: 487 Miles

After leaving Glenrio, Texas, Route 66 continued west in its 1926 alignment, through Tucumcari, Cuervo, and Santa Rosa before turning north for Santa Fe.

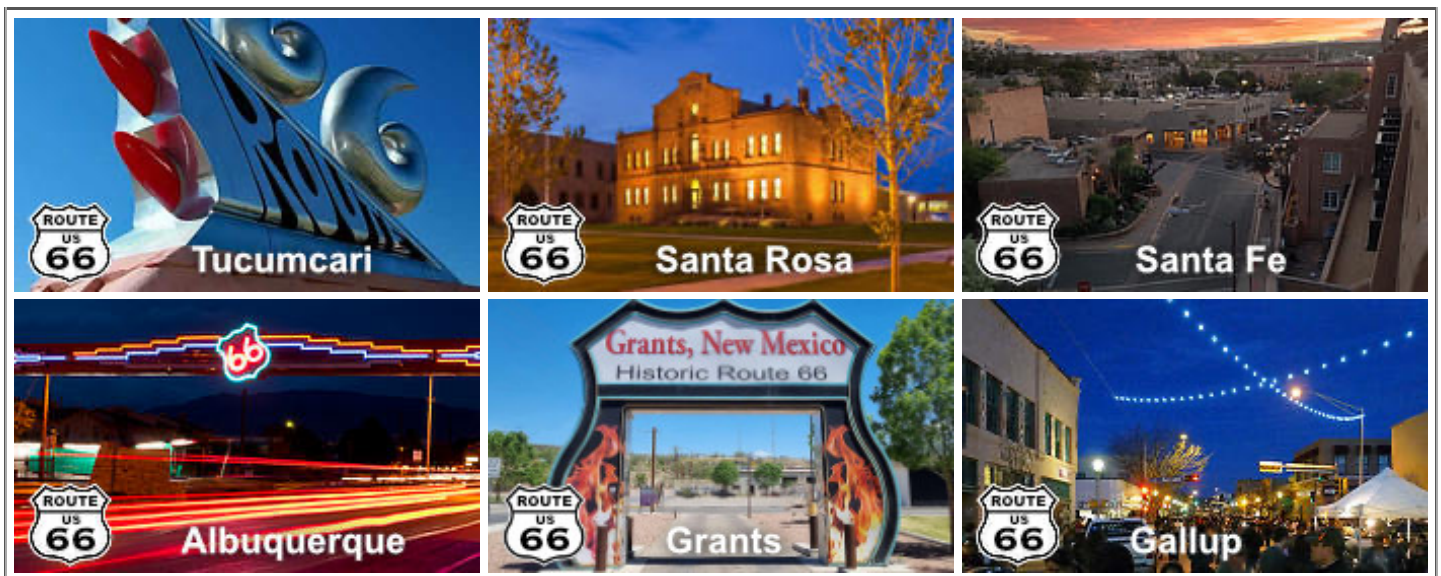
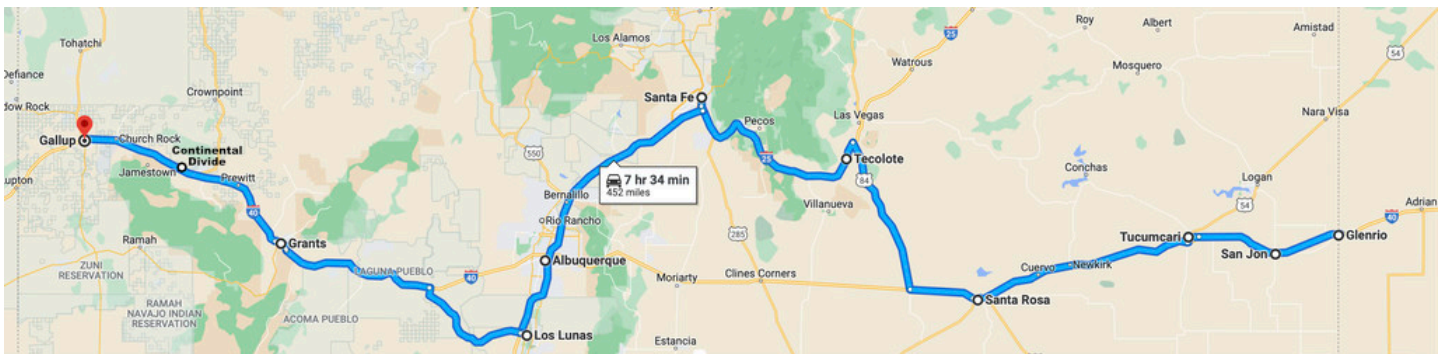


From the capitol city, it ran southwest thru Albuquerque and Grants to Gallup near the Arizona border.

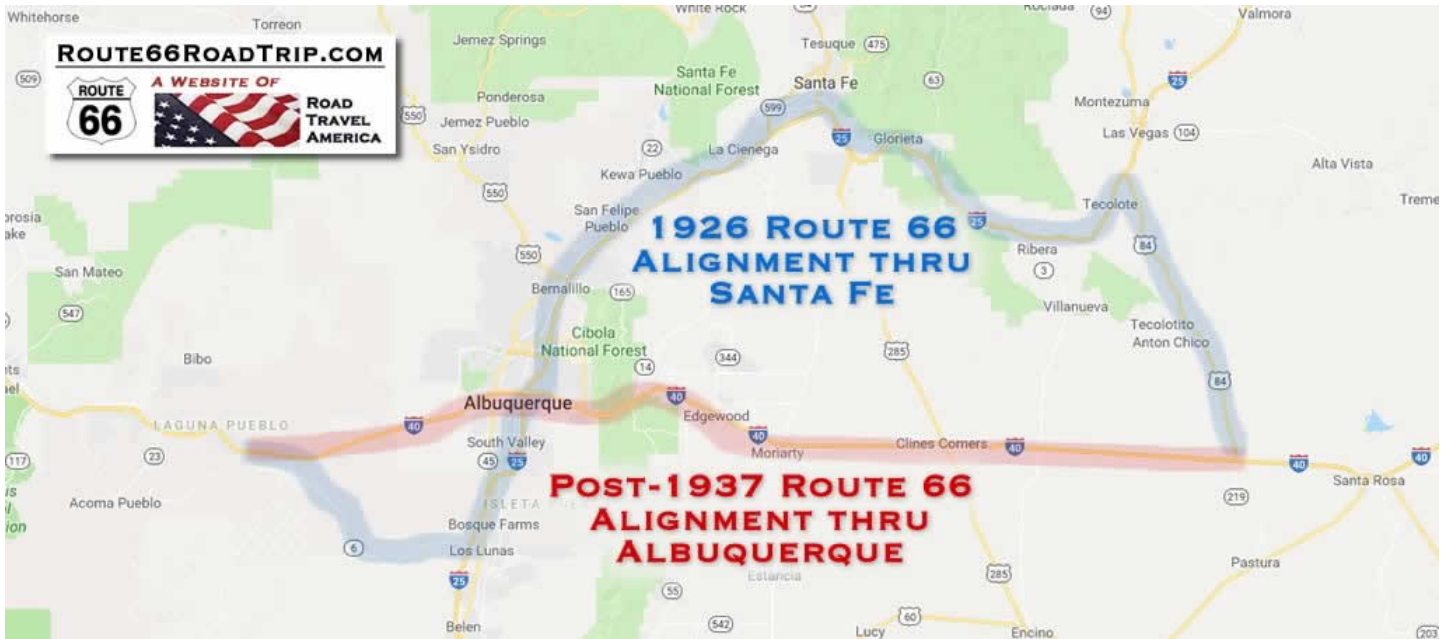
Take a road trip on Route 66 across New Mexico

In later years, it would continue west from the Santa Rosa area through Clines Corner on a more direct route to Albuquerque.

*Map showing cities and towns along an early alignment of U.S. Route 66 across New Mexico, from Glenrio to Gallup*



### *Route 66 alignment in central New Mexico in 1926 and post-1937*



## ARIZONA ROUTE 66

### Map of Arizona Route 66: 401 Miles

Arizona is one of our favorite Route 66 destinations, with many miles of original roadbeds still open, and minimal congestion on most segments.

The largest city on the route is Flagstaff, with only about 65,000 residents. Other stops along the way are smaller towns ... traffic is not a problem on Route 66 in Arizona!

Arizona includes several of our favorite places and scenes along the Mother Road, like:

- [Holbrook](#)
- [Winslow](#)
- [Flagstaff](#)
- [Williams](#)
- [Ash Fork](#)
- [Seligman](#)
- [Kingman](#)
- [Oatman](#)



Take a road trip on Route 66 across Arizona

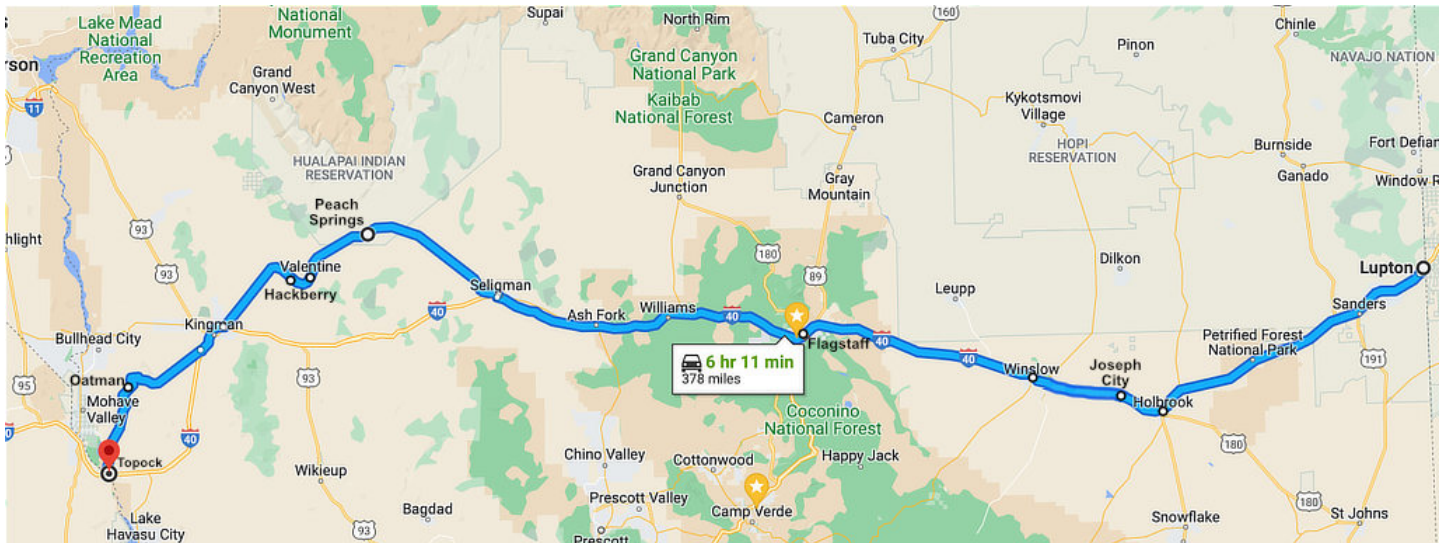
Some of today's journey is on I-40, which parallels the old Route 66 in many places. We always drive the segments of the Mother Road where it still remains. Exits from I-40 onto Route 66 are marked in many locales.



Driving time non-stop from Lupton (near Gallup) at the New Mexico border to Oatman is 5:45, less than a day's drive. But you probably want to split the trip up into at least two days.

Major concentrations of lodging are found in Gallup, NM, Flagstaff and Kingman. Many other lodging options are available in other cities such as Winslow and Williams, as well as smaller towns.

*Map showing the approximate route of U.S. Highway 66 across Arizona from Lupton to Topock*



Holbrook to Flagstaff



Flagstaff to Seligman



# CALIFORNIA ROUTE 66

## Map of California Route 66: 314 Miles

Route 66 ran southwest out of Kingman through Cool Springs to Oatman, and onward to Golden Shores and Topock where it turned west to Needles, California.

From the Arizona state line to San Bernardino U.S. Highway 66 followed the old National Old Trails Highway.

In 1936 U.S. 66 was extended from downtown Los Angeles to U.S. 101, at Santa Monica.

In 1940 the first freeway in Los Angeles was included as part of U.S. 66, the Arroyo Seco Parkway, later known as the Pasadena Freeway.



Take a road trip on Route 66 across California

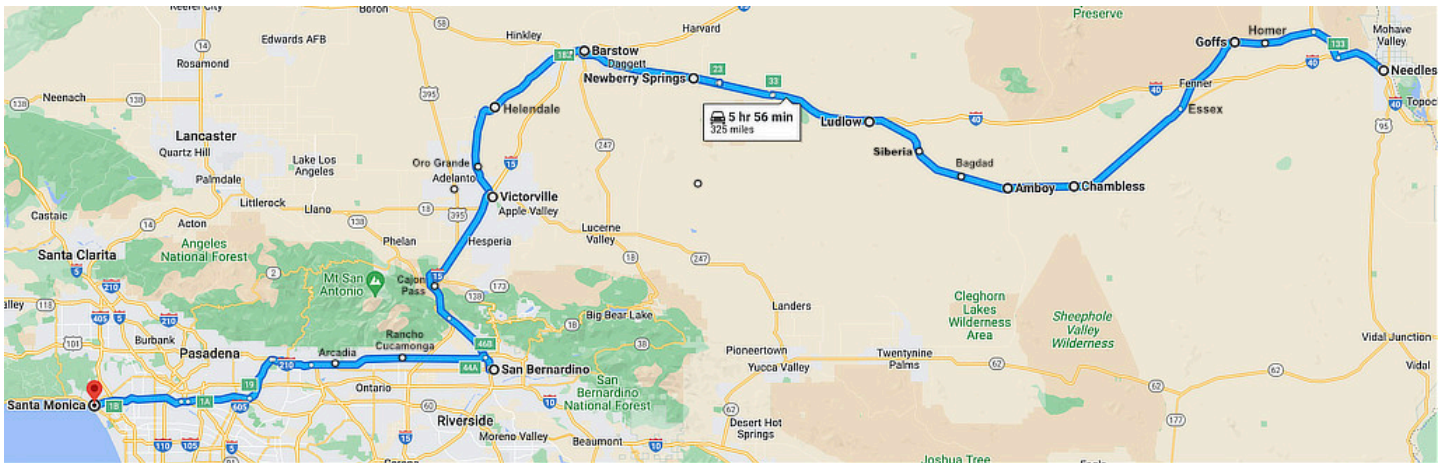
The highway is now mostly replaced with several streets in Los Angeles, State Route 66 (SR 66), Interstate 15 (I-15) and I-40.

The **Mother Road** passed through cities and towns like these as it made its way westbound across California:

- Needles
- Goffs
- Fenner
- Chambless
- Amboy
- Ludlow
- Newberry Springs
- Barstow
- Helendale
- Oro Grande
- Victorville
- Cajon Pass
- San Bernardino
- Rancho Cucamonga
- Arcadia
- Pasadena
- Santa Monica



*Map showing the approximate route of an early alignment of U.S. Highway 66 from Needles to Santa Monica, California*



The original terminus of U.S. Route 66 was at 7th and Broadway in downtown Los Angeles. However, over the years, and decades, Route 66 has had several “official” and “unofficial” ending points.

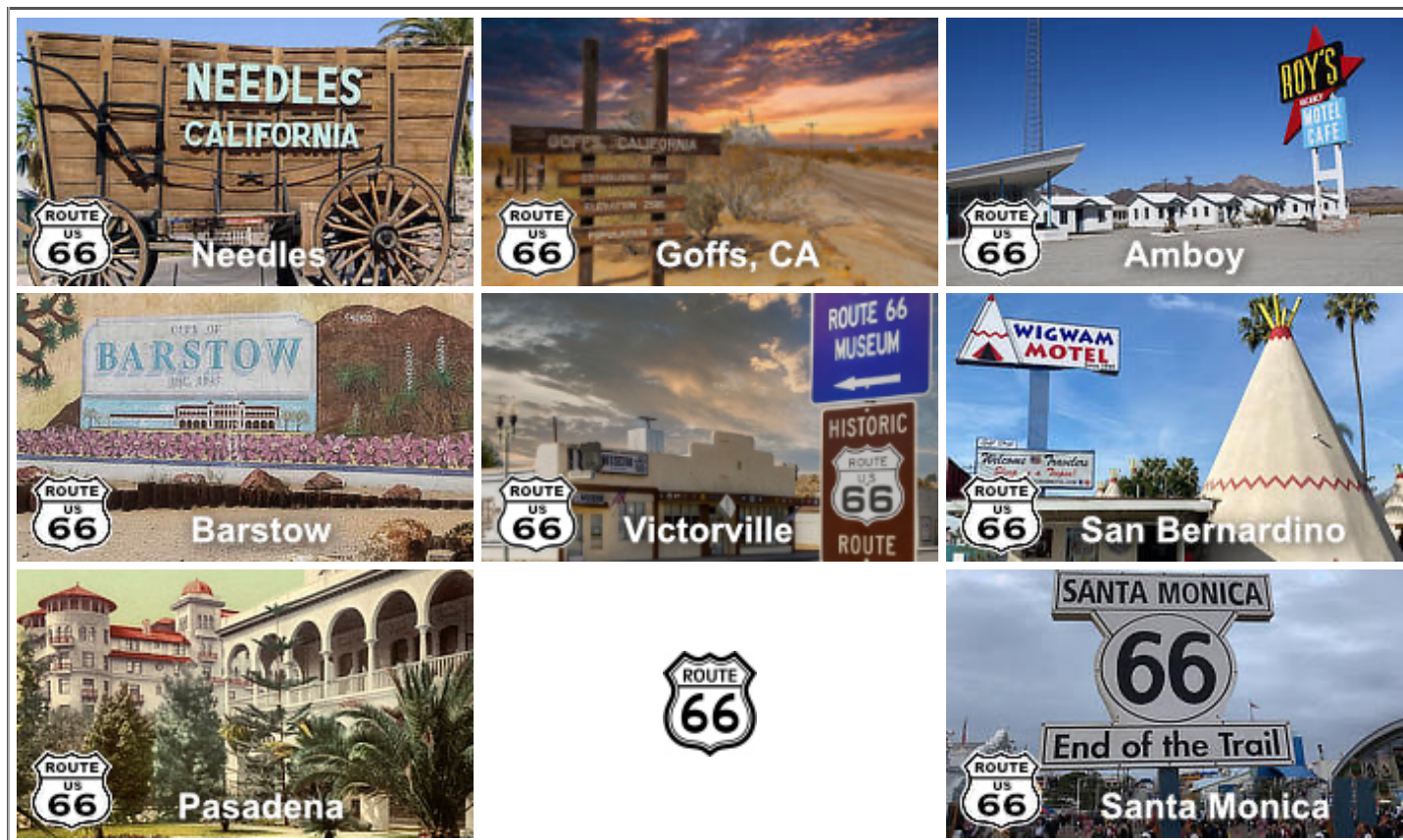
The route was later extended to the intersection of Lincoln and Olympic boulevards in Santa Monica, about one mile from the Pacific Ocean. This is often referred to as the **official ending point** of Route 66.

*Map showing the "official" and "unofficial" ending points of Route 66 in Santa Monica, California*  
(click image to open in Google Maps)



Since this locale can be disappointing after the long journey from Chicago, the Route 66 Alliance partnered with the Santa Monica Pier Restoration Corporation in 2009 to mount an **unofficial “End of the Trail” sign** on the pier, seen below in 2020.

*The End of the Trail ... Santa Monica, California (Staff Photo)*





## Popular Route 66 resources for your next road trip!

### Route 66 Travel Guide - 202 Amazing Places

by Mark Watson



### Route 66 Full-throttle Adventure Handbook,

by Drew Knowles



## About These Products

The Route 66 Road Trip website is a participant in the Amazon Services LLC Associates Program, an affiliate advertising program designed to provide a means for sites to earn fees by advertising and linking to Amazon.com and affiliated sites. Amazon offers a commission on products sold through their affiliate links. There is no additional cost to you.

### **ROUTE 66 ROAD TRIP: THE STORE**

[WWW.ROUTE66ROADTRIP.COM](http://WWW.ROUTE66ROADTRIP.COM)



Books, maps, hats, videos, clothing, memorabilia and more!

# Route 66 Hotel Listings and Traveler Reviews



[Chicago, Illinois](#)

[Pontiac, Illinois](#)

[Springfield, Illinois](#)

[St. Louis, Missouri](#)

[Springfield, Missouri](#)

[Tulsa, Oklahoma](#)

[Yukon, Oklahoma](#)

[Clinton, Oklahoma](#)

[Shamrock, Texas](#)

[Tucumcari, New Mexico](#)

[Santa Fe, New Mexico](#)

[Grants, New Mexico](#)

[Holbrook, Arizona](#)

[Flagstaff, Arizona](#)

[Seligman, Arizona](#)

[Needles, California](#)

[Victorville, California](#)

[Arcadia, California](#)

[Joliet, Illinois](#)

[Bloomington, Illinois](#)

[Litchfield, Illinois](#)

[Lebanon, Missouri](#)

[Joplin, Missouri](#)

[Oklahoma City, Oklahoma](#)

[Weatherford, Oklahoma](#)

[Elk City, Oklahoma](#)

[Amarillo, Texas](#)

[Santa Rosa, New Mexico](#)

[Albuquerque, New Mexico](#)

[Gallup, New Mexico](#)

[Winslow, Arizona](#)

[Williams, Arizona](#)

[Kingman, Arizona](#)

[Barstow, California](#)

[San Bernardino, California](#)

[Santa Monica, California](#)



# Additional Route 66 Mapping & Travel Resources

[Route 66 Maps at the National Park Service \(NPS\)](#)

[Google Maps of Route 66](#)

[Enjoy Illinois: Route 66](#)

[Visit Missouri: Route 66](#)

[Kansas Travel: Route 66](#)

[Travel Oklahoma: Route 66](#)

[Travel Texas: Route 66](#)

[New Mexico: Route 66](#)

[Visit Arizona: Route 66](#)

[Visit California: Route 66](#)



Copyright © 2025 Route66RoadTrip.com • All Rights Reserved.

